



BUILDING THE WAY



What exciting times we are in for Christian Education! God is filling and over-filling our schools with children eager to learn – eager to hear the good news of Jesus Christ. Not only at Cairn Christian Schools are we experiencing tremendous growth, but we hear of other Christian schools throughout the province

experiencing a similar surge in enrollment. God is moving!

For that reason, I am so excited and honored to be leading the Building the Way Campaign. Our goal is to raise \$3.2 million in support of eliminating our debt, improvements to the Stoney Creek campus and an addition and renovation at the Smithville campus.

The overarching reason to do all this is to provide necessary space for the many young hearts and

minds coming through Cairn's doors and to build a solid financial foundation for our future.

It is our privilege and duty as parents, grandparents and the greater Church family to proclaim the mighty acts and power of God to the next generation. Personally, I am thankful that my grandson, Elijah, is one of the many children that have started at Cairn Christian School this year and will hear of His mighty acts and power. I am sure you have your own stories of how God has been faithful from generation to generation.

I ask that you reflect on God's mighty acts and power in your life and then prayerfully consider your support for this exciting movement. Through God's blessing, we are "Building the Way."

Wayne Schilstra



Campaign Chair

PRAY

GIVE

VOLUNTEER

SUPPORT

GROW



FOLLOWING HIS PATH

God has been working in and through our schools in the lives of students for more than 50 years. Together, let's continue to follow His great path for Cairn Christian School and equip more children for years to come!

BUILDING ON OUR LEGACY

Cairn Christian School was built on the legacy of those who believed in the vision for Christ-centred education all those years ago. Meeting the needs of our students and future families will continue this legacy into the future. However, our current facilities do not meet the program or space requirements for the changing learning environment and our steadily growing enrollment.

The Building the Way Campaign will provide the vehicle and momentum needed to continue our vision of being equipped to lead in education, and to explore and apply the best educational methods so that our students are poised to lead and make a difference in the world.





SMITHVILLE CAMPUS

An addition to the Smithville campus will provide 4 more classrooms to meet our growing student population, especially for our youngest learners. It will allow for all students to learn inside the comforts of a building, rather than in portables, honouring them with adequate and beautiful workspaces in which to collaborate and feed their curiosity while learning to Lead the Way.

This campaign will include:

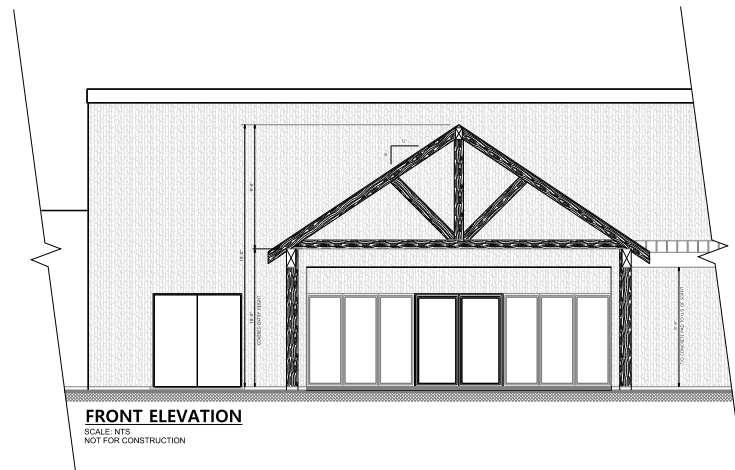
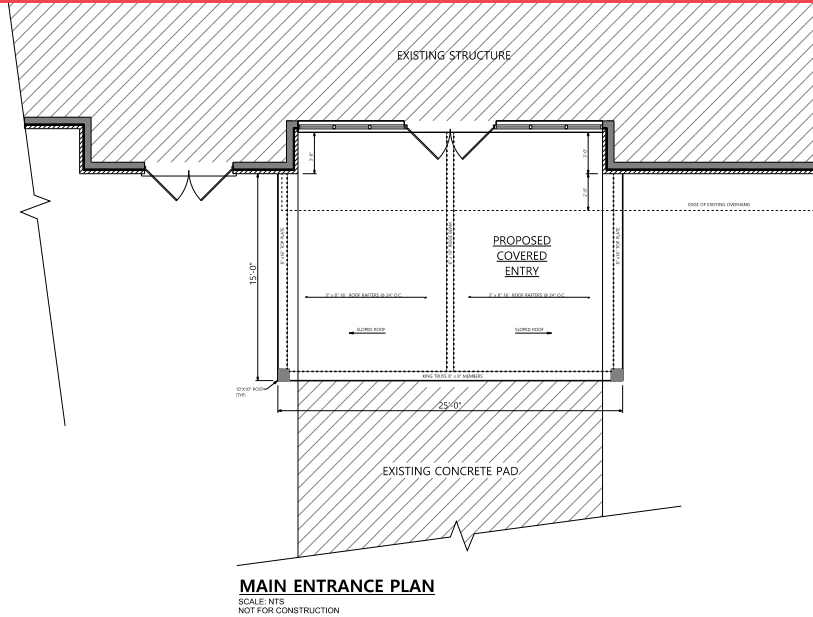
- Two Kindergarten classrooms with separate entrances and washroom facilities
- Two Primary classrooms
- Renovations to our entryway, student services, and much needed administrative spaces will welcome our visitors and provide enhanced security and accessibility to our diverse community of learning.

STONEY CREEK CAMPUS

Increased enrollment and community use of the facility are providing challenges for the Stoney Creek campus and, as the original part of our building is aging, we need to address repairs in excess of our operational budget to protect the building and provide for the safety of our students.

Our projects include:

- Replacement of the original roof to prevent any further water damage and provide long-term sustainability.
- Creating an outdoor learning space and replacing our aging play structures will enhance active learning and inject new life into the learning experiences of our students.
- An enhanced rear entryway will provide full accessibility and will create a more open and welcoming experience for visitors, as well as safeguard for our students and staff.
- Repairs to the fire services road will ensure it is safe and accessible.





ELIMINATING OUR DEBT

Debt incurred from amalgamations, past renovations and three consecutive years of deficit budgets many years ago, has given way to a decade of balanced budgets and a strong financial picture today. Increased enrollment, responsible budgeting and diligent, sustained payments have significantly reduced the debt to its current level.

Fully eliminating the debt will provide financial stability and ensure tuition fees will be directed entirely to operations. More importantly, it will allow our schools to invest further into our students and their learning.



We give our heartfelt appreciation to those who are sharing their time and talents with the Building the Way Campaign to ensure its success:

Wayne Schilstra, Chair
Wendy Colyn
Bonnie Desjardins, Stoney Creek
Principal
Jessica Dreyer
Kevin Huinink, Executive
Director
Cheryl Janssen
Joyce Koorneef, Smithville
Principal
Danielle Vandenberg
Duane VanGeest

If you received this newsletter in duplicate, please pass it on and share the exciting developments with others. Connect with us to provide your email address and receive correspondence electronically: campaign@cairnchristianschool.ca.