



Building the Way Campaign



INVITATION TO INVEST

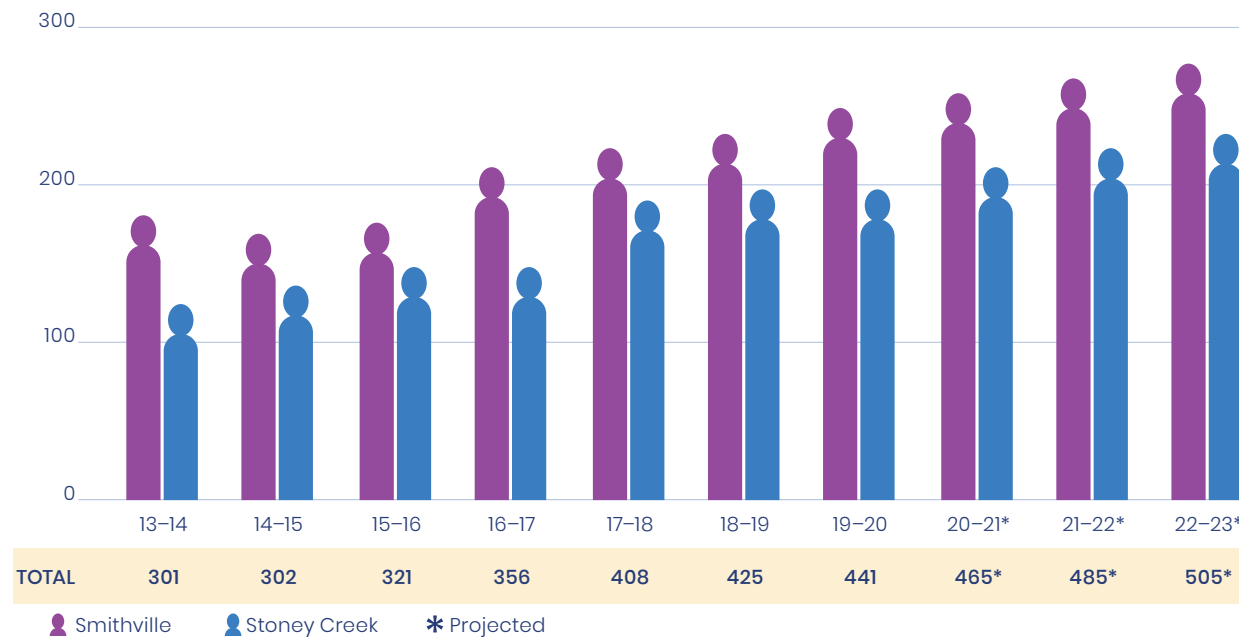
FOLLOWING HIS PATH

At Cairn Christian School, students are inspired to love, learn and lead together with integrity and joy. Students learn deeply about God's world so they may continue to grow in character, knowledge and wisdom, and with the tools to spread His love to others where He leads them.

Over the years, thousands of students have experienced the high-quality Christian education that we provide, and now more and more families are desiring and seeking the same transformational impact for their children.

Our current facilities, however, do not meet the program or space requirements to meet our steadily growing enrolment and changing needs.

School Enrolment



The success of the *Building the Way Campaign* will be the fuel to move us forward with several necessary capital projects to expand our ability to meet our current program needs, welcome more students, and enhance our learning environments.

Your commitment to our *Building the Way Campaign*, both spiritually and financially, will enable us to continue to meet our vision and mission faithfully by providing the physical space needed to meet program and enrolment demands, as well as relieving us of the burden of our debt. These needs will be met as quickly as you, our supporters, pray, think and make decisions about giving.

God has been working in and through our schools in the lives of students for more than 50 years. Together, let's continue to follow His great path for Cairn Christian School and equip more children for years to come!



[Signature]

Kevin Huinink
Executive Director



[Signature]

Nigel Harnanan
Board Chair

MISSION Inspiring students to love, learn, and lead together in God's world.

VISION To be the leaders in education by inspiring a diverse and unified student body to love, learn, and lead with God's grace, bringing Christ's love to the world.

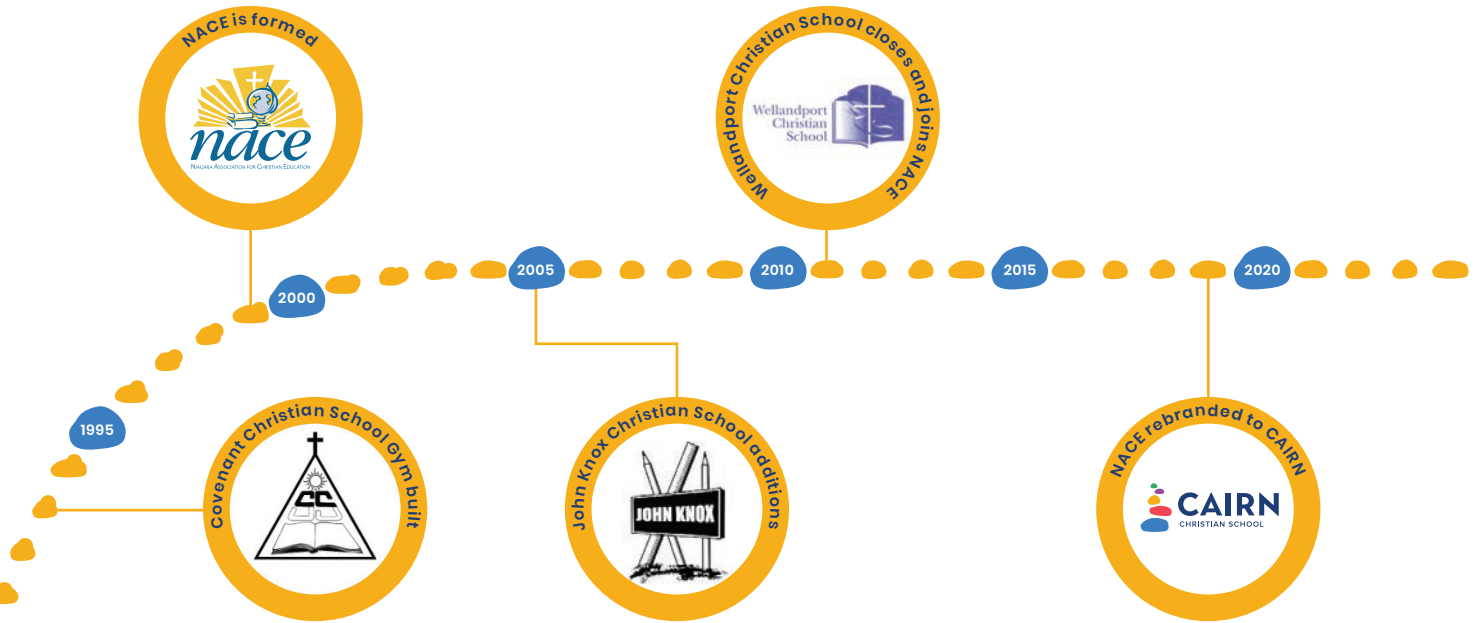
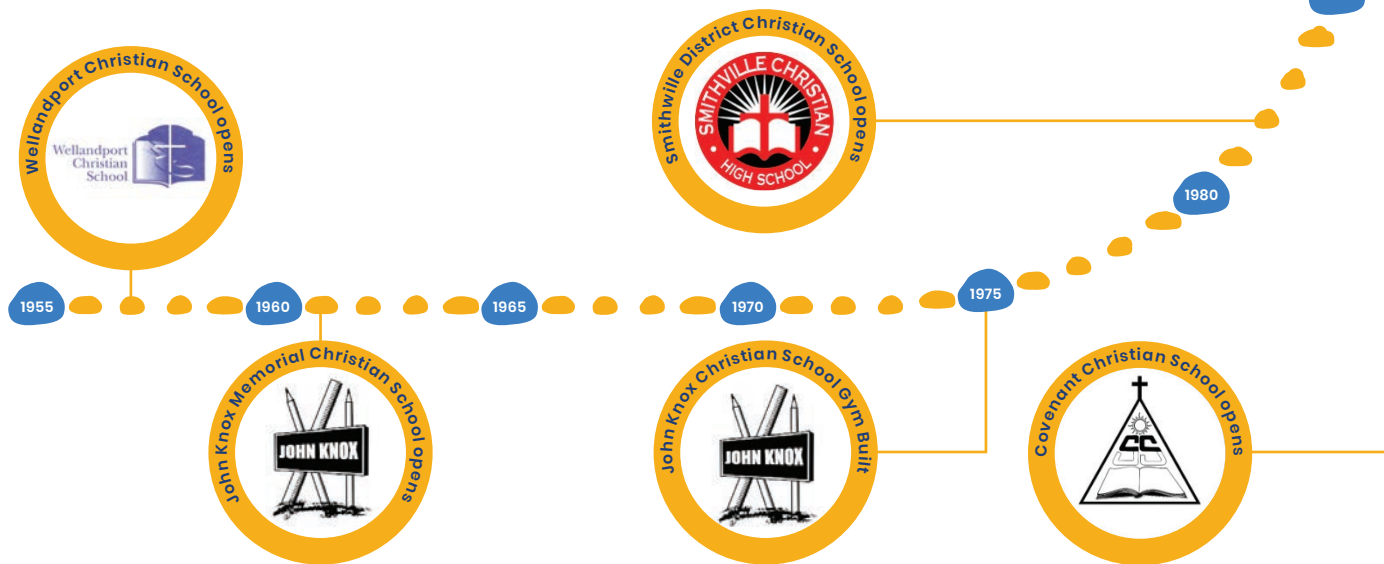


LEADING THE WAY...

The vision and generosity of our supporters since the 1950s has generated a legacy in and through thousands of graduates of our schools. As our school communities have found their way to working together, answering God's call and following His leading, we see His faithfulness over the years, leading to our current reality.

With families from over 50 churches, Cairn Christian School provides vibrant, active educational centres that are filling to and beyond capacity—places where students are equipped to develop their gifts, excel in learning and make a difference in the world.

This legacy and long-term leadership has not gone unnoticed as new families catch this vision, step up, and continue to lead our schools to faithfully seek God in everything, answering the call to offer quality Christian education for their children.



BUILDING THE WAY...

Meeting the needs of our current students and future families will continue this legacy into the future for generations to come. *The Building the Way Campaign* will provide the vehicle and momentum needed to meet the vision of our schools—equipped to lead in education, to explore and apply the best educational methods so that our students are also poised to lead and make a difference in the world.

“**Enlarge the place of your tent, stretch your tent curtains wide, do not hold back; lengthen your cords, strengthen your stakes.**”
— Isaiah 54:2 NIV





SMITHVILLE CAMPUS

Joyce Koornneef
Principal

Our Smithville campus has experienced sustained increased enrolment since 2012, which has led to challenges for our building. The school was built to accommodate a single Kindergarten class and today, our program has grown to include a Junior and Senior Kindergarten, with both meeting five days a week. We are currently using three portable classrooms to accommodate student numbers and are continually challenged to accommodate the need for space for other school programs.

“ **Our grandchildren are flourishing at Cairn Christian School. Having them in an environment that is focused on Christian education is a priority for our family— knowing that the teachers and staff walk alongside our family gives us comfort. It is also important that our schools stay competitive in their programming and facilities to prepare the students for life. Upgrades and expansion are critical to ensure enrolment continues to grow.** ”

— John Langendoen, Grandparent

An addition to the Smithville campus will provide more classrooms to meet our growing student population, especially for our youngest learners. It will allow for all students to learn inside the comforts of a building, rather than some in portables, honouring them with adequate and beautiful workspaces in which to collaborate and feed their curiosity while learning to Lead the Way.

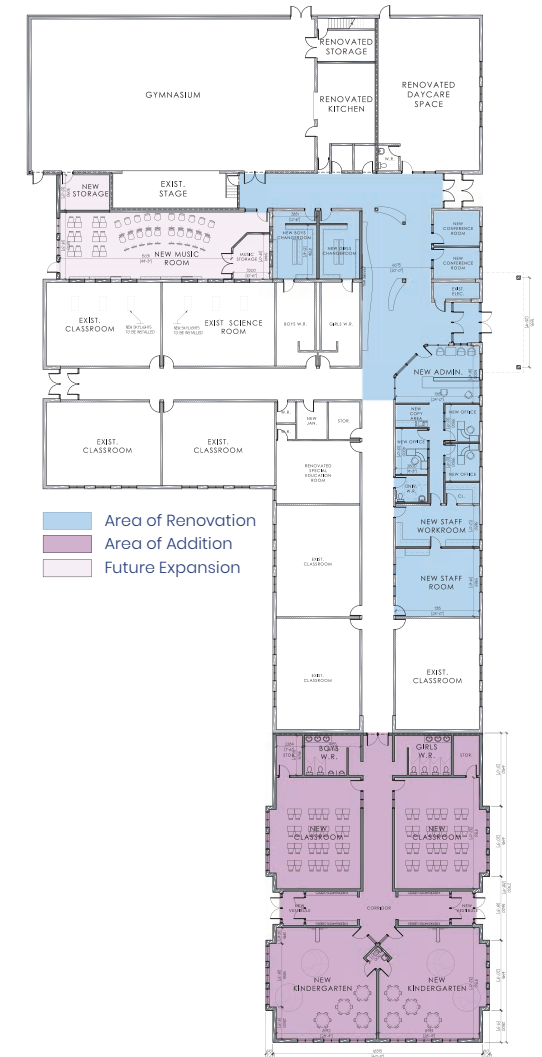
This campaign will allow us to:

Add four more classrooms:

- Two dedicated Kindergarten classrooms with separate entrances and washroom facilities

- Two primary classrooms

Renovations to our entryway, student services, and much-needed administrative spaces will welcome our visitors and provide enhanced security and accessibility to our diverse community of learning.





STONEY CREEK CAMPUS

Bonnie Desjardins
Principal

Our school is a very busy place due to increasing enrolment and community use of our facilities. Parts of our building are aging and need some care beyond the limits of our yearly operational budget. Read below about desired enhancements to education and our building to ensure we are able to offer excellent opportunities for our students, staff, and community.

The *Building the Way Campaign* will provide:

Outdoor Education Space

Classroom instruction has evolved over the years, and with a greater focus on outdoor education – celebrating God’s gift of creation in a meaningful and hands-on manner. Creating an outdoor learning space and replacing our aging play structures will enhance active learning and inject new life into the learning experiences of our students.

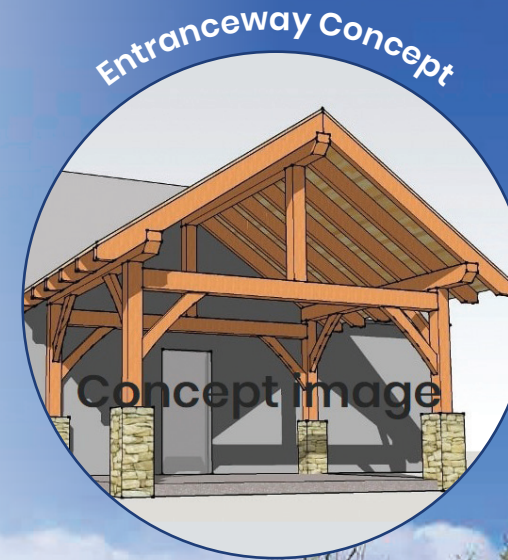
Entranceway

We are blessed with additional sources of revenue through the regular rental of our gym and kitchen. An enhanced rear entryway will provide full accessibility and will create a more open and welcoming experience for visitors, students, and staff.

Roof Replacement

A significant portion of the Stoney Creek campus was built in the 1960s. It has been well taken care of over the years, but it is now time to invest in the facility and replace the original roof. This will prevent any further water damage and will provide long-term sustainability.

Finally, repairs to the fire services road will ensure it is safe and accessible.



ELIMINATING OUR DEBT

Debt incurred from amalgamations, past renovations and three consecutive years of deficit budgets many years ago, has given way to a strong financial picture today after a decade of balanced budgets. Increased enrolment, responsible budgeting and diligent, sustained payments have significantly reduced the debt to its current level.

Fully eliminating the debt now will provide financial stability and ensure tuition fees will be directed entirely to operations.

More importantly, it will allow our schools to invest further into our students and their learning instead of servicing debt loads.



*Concept only



Let each generation tell its children of your mighty acts; let them proclaim your power.

— Psalm 145:4 - NLT

What exciting times we are in for Christian education! God is filling and over-filling our schools with children eager to learn – eager to hear the good news of Jesus Christ. Not only at Cairn Christian School are we experiencing growth, but we hear of other Christian schools throughout the province experiencing a similar surge in enrolment. God is moving!

For that reason, I am so excited and honored to be leading the *Building the Way Campaign*. Our goal is to raise \$3.2 million in support of eliminating our debt, improvements to the Stoney Creek campus and an addition and renovation at the Smithville campus. The overarching reason to do all this is to provide necessary space for the many young hearts and minds coming through Cairn's doors and to build a solid financial foundation.

It is our privilege and duty as parents, grandparents and the greater Church

family to proclaim the mighty acts and power of God to the next generation.

Personally, I am thankful that my grandson, Elijah, is one of the many children that have started at Cairn Christian School this year and will hear of His mighty acts and power. I am sure you have your own stories of how God has been faithful from generation to generation.

I ask that you reflect on God's mighty acts and power in your life and then prayerfully consider your support for this exciting movement. Through God's blessing, we are *Building the Way*.

Wayne Schilstra

Chair, *Building the Way Campaign*

THE CAMPAIGN

A campaign of \$3.2M is an ambitious task. Its success depends on our faith in God and His guidance to help each one of us find a way to make a sacrificial gift to the campaign. Every contribution to the campaign is an important one and together, every gift will ensure our campaign is a success so the next generations of Cairn Christian School students will continue to thrive. Thank you for prayerfully considering how you too can be part of the future of Cairn Christian School and the *Building the Way Campaign*.

The campaign will bring many other positive outcomes for our school. It will help us build new relationships, strengthen existing ones and reconnect with the past. All this will be possible by placing our faith and trust in God who has provided us with so many resources to share generously with hearts of thanksgiving.

Stoney Creek Renovations	Smithville Addition	Debt Reduction	Contingency	Annual Drive Contribution	Professional Fees & Campaign Costs	Grand Total
\$80,000	\$1,699,000	\$650,000	\$235,000	\$150,000	\$386,000	\$3,200,000

Canada Revenue Agency provides tax credits for donations to charitable organizations. In the majority of cases, the donation tax credit is approximately 40% of the total donation, resulting in an actual cost of 60% of the donated amount. There are other giving vehicles available such as gifts of stocks or securities that can provide increased tax benefits.

Gift Chart

TOTAL GIFT OVER 3 YEARS	\$500k	\$320k	\$200k	\$150k	\$125k	\$75k	\$50k	\$25k	\$15k	\$10k	\$7.5k	\$5k	\$2.5k
MONTHLY	\$13,889k	\$8,889k	\$5,556k	\$4,167k	\$3,472k	\$2,083k	\$1,389k	\$694	\$417	\$278	\$208	\$139	\$69
TAX CREDIT BASED ON 40%	\$200k	\$128k	\$80k	\$60k	\$50k	\$30k	\$20k	\$10k	\$6k	\$4k	\$3k	\$2k	\$1k
ACTUAL COST OF GIFT	\$300k	\$192k	\$120k	\$90k	\$75k	\$45k	\$30k	\$15k	\$9k	\$6k	\$4.5k	\$3k	\$1.5k
ACTUAL COST MONTHLY	\$8,333k	\$5,333k	\$3,333k	\$2.5k	\$2,083k	\$1,250k	\$833	\$417	\$250	\$167	\$125	\$83	\$42

When considering your gift, it is important to seek professional financial counsel.



Contact information:

CAIRN CHRISTIAN SCHOOL

www.cairnchristianschool.ca

campaign@cairnchristianschool.ca

905-957-7796