



Building the Way Campaign



AN INVITATION TO INVEST

Prepared for **XXX**

Date

An Introduction



Start children off on the way they should go, and even when they are old they will not turn from it.
- Proverbs 22:6

At Cairn Christian School, students are inspired to love, learn and lead together with integrity and joy. Students learn deeply about God's world so they may continue to grow in character, knowledge and wisdom, and with the tools to spread His love to others where He leads them.

Over the years, thousands of students have experienced the high-quality Christian education that we provide, and now more and more families are desiring and seeking the same transformational impact for their children.

Our current facilities, however, do not meet the program or space requirements to meet our steadily growing enrolment and changing needs.

Enrolment Chart



An Introduction

Leading the Way...

The vision and generosity of our supporters since the 1950s has generated a legacy in and through thousands of graduates of our schools. As our school communities have found their way to working together, answering God's call and following His leading, we see His faithfulness over the years, leading to our current reality.

With families from over 50 churches, Cairn Christian School provides vibrant, active educational centres that are filling to and beyond capacity – places where students are equipped to develop their gifts, excel in learning and make a difference in the world.

This legacy and long-term leadership has not gone unnoticed as new families catch this vision, step up, and continue to lead our schools to faithfully seek God in everything, answering the call to offer quality Christian education for their children.



Building the Way...

Meeting the needs of our current students and future families will continue this legacy for generations to come. The *Building the Way Campaign* will provide the vehicle and momentum needed to meet the vision of our schools – equipped to lead in education, to explore and apply the best educational methods so that our students are also poised to lead and serve in God's kingdom.

Our community's commitment to our *Building the Way Campaign*, both spiritually and financially, will enable us to continue to meet our vision and mission faithfully by providing the physical space needed to meet program and enrolment demands, as well as relieving us of the burden of our debt.

The success of the *Building the Way Campaign* will be the fuel to move us forward with these necessary projects to provide an enhanced learning environment for our children to flourish.

"Our grandchildren are flourishing at Cairn Christian School. Having them in an environment that is focused on Christian education is a priority for our family – knowing that the teachers and staff walk alongside our family gives us comfort. It is also important that our schools stay competitive in their programming and facilities to prepare the students for life. Upgrades and expansion are critical to ensure enrolment continues to grow." – John Langendoen, Grandparent

Our Vision for the Future

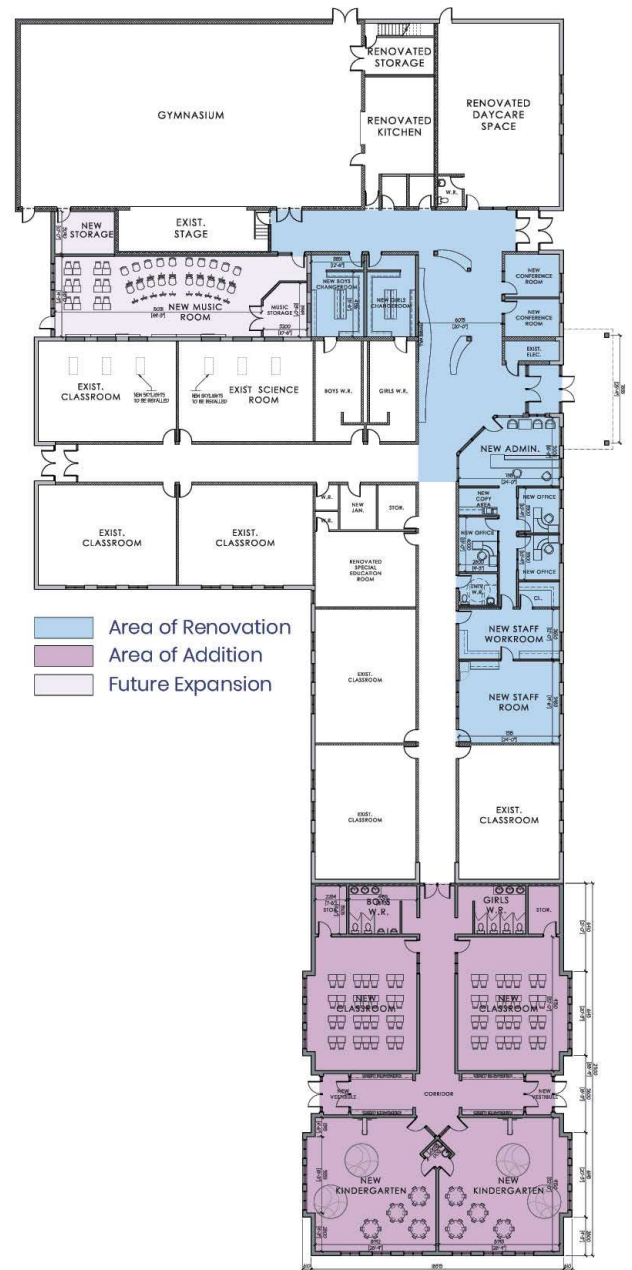
Smithville Campus

Our Smithville campus has experienced sustained increased enrolment since 2012, which has led to challenges for our building. The school was built to accommodate a single Kindergarten class and today, our program has grown to include a Junior and Senior Kindergarten, with both meeting five days a week. We are currently using three portable classrooms to accommodate student numbers and are continually challenged to accommodate the need for space for other school programs.

An addition to the Smithville campus will provide more classrooms to meet our growing student population, especially for our youngest learners. It will allow for all students to learn inside the comforts of a building, rather than some in portables, honouring them with adequate and beautiful workspaces in which to collaborate and feed their curiosity while learning to Lead the Way.

This campaign will allow us to:

- Add four more classrooms:
 - Two dedicated Kindergarten classrooms with separate entrances and washroom facilities
 - Two primary classrooms
- Renovate our entryway, student services and administrative spaces to welcome our visitors and provide efficiencies.
- Provide enhanced security and accessibility to our diverse community of learning.



Our Vision for the Future

Stoney Creek Campus

Our school is a very busy place due to increasing enrolment and community use of our facilities. Parts of our building are aging and need some care beyond the limits of our yearly operational budget. It is our desire to provide enhancements to education and our building to ensure we are able to offer excellent opportunities for our students, staff and community. The *Building the Way Campaign* will provide:

Outdoor Education Space

Classroom instruction has evolved over the years, and with a greater focus on outdoor education - celebrating God's gift of creation in a meaningful and hands-on manner. Creating an outdoor learning space and replacing our aging play structures will enhance active learning and inject new life into the learning experiences of our students.

Entranceway

We are blessed with additional sources of revenue through the regular rental of our gym and kitchen. An enhanced rear entryway will provide full accessibility and will create a more open and welcoming experience for visitors, students, and staff.

Roof Replacement

A significant portion of the Stoney Creek campus was built in the 1960s. It has been well taken care of over the years, but it is now time to invest in the facility and replace the original roof. This will prevent any further water damage and will provide long-term sustainability.

Finally, repairs to the fire services road will ensure it is safe and accessible.



Our Vision for the Future



Eliminating Our Debt

Debt incurred from amalgamations, past renovations and three consecutive years of deficit budgets many years ago, has given way to a strong financial picture today after a decade of balanced budgets. Increased enrolment, responsible budgeting and diligent, sustained payments have significantly reduced the debt to its current level.

Fully eliminating the debt now will provide financial stability and ensure tuition fees will be directed entirely to operations.

More importantly, it will allow our schools to invest further into our students and their learning instead of servicing debt loads.

Let each generation tell its children of our mighty acts; let them proclaim your power.

– Psalm 145:4 - NLT

Building the Way Campaign

The Campaign

To bring our vision to reality, we have launched the \$3.2M *Building the Way Campaign*. Its success depends on our faith in God and His guidance, and the commitment of our community so the next generations of Cairn Christian School students will continue to thrive.

The campaign will bring many other positive outcomes for our school. It will help us build new relationships, strengthen existing ones and reconnect with the past. All this will be possible by placing our faith and trust in God who has provided us with so many resources to share generously with hearts of thanksgiving.

Stoney Creek Renovations	Smithville Addition	Debt Reduction	Contingency	Annual Drive Contribution	Professional Fees & Campaign Costs	Grand Total
\$80,000	\$1,699,000	\$650,000	\$235,000	\$150,000	\$386,000	\$3,200,000

Investing in Future Generations

We have a clear vision for our school and for the quality Christian education we provide that equips young children to grow, learn, and serve in God's likeness in the world we live in. We believe our mission and values are aligned with those of the **XXX FOUNDATION** and that we share a strong commitment to Christian education.

It is our hope the **XXX FOUNDATION** will consider an investment in Christian education at Cairn Christian School through our *Building the Way Campaign*.

We respectfully request the **Foundation** to consider a gift of **\$XXXX**. Your investment will help us position our school, programming, and facilities for our students today and for future generations.

We are committed to building upon the legacy of Christian education at Cairn Christian School, and to renovate, repurpose, and invest to prepare our students to continue to learn and serve in God's world. This campaign will ensure Christian education remains a choice in the Hamilton and Niagara region for generations to come.

Thank you for prayerfully considering an investment in the future of Cairn Christian School and the *Building the Way Campaign*.

We hope the **XXX Foundation** will join us on this journey.

In His Service,



Kevin Huinink, Executive Director
Cairn Christian School

Charitable Registration No.

